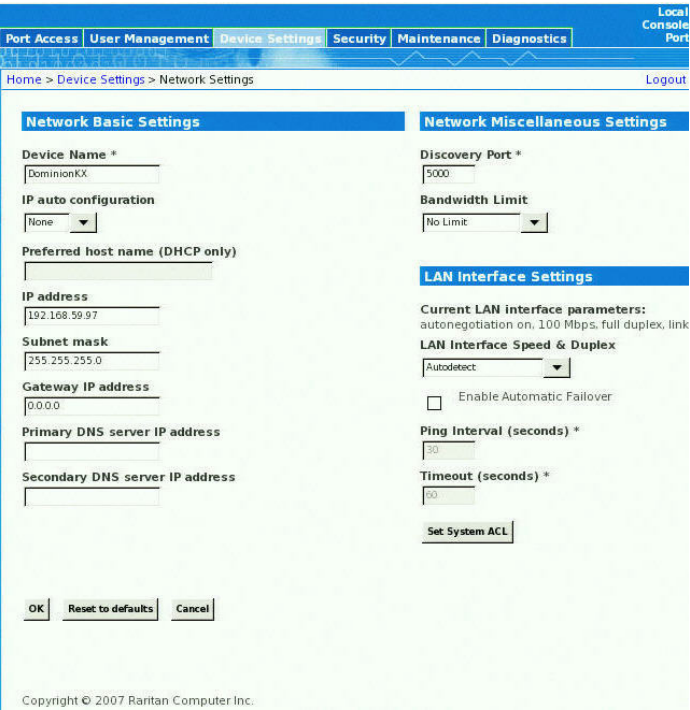


1. Power ON the Dominion KX II using the power switch(es) at the back of the unit. Please wait for the Dominion KX II unit to boot. (A beep signals completion of the boot.)
2. Once the unit has booted, the KX II Local Console is visible on the monitor attached to the Dominion KX II local port. Type the default username (admin) and password (raritan) and click **Login**. The Change Password screen is displayed.
3. Type your old password (raritan) in the **Old Password** field.

4. Type a new password in the **New Password** field; retype the new password in the **Confirm New Password** field. Passwords can be up to 64 characters long and can consist of English alphanumeric and printable special characters.
5. Click **Apply**.
6. You will receive confirmation that the password was successfully changed. Click **OK**. The Port Access page opens.

B. Assign an IP Address

1. From the KX II Local Console, select **Device Settings > Network Settings**. The Network Settings page opens.
2. Specify a meaningful **Device Name** for your Dominion KX II unit; up to 16 alphanumeric and special characters, no spaces.
3. Choose the IP configuration from the **IP auto configuration** drop-down list:
- **None (Static IP)**. This is the recommended option because the Dominion KX II is an infrastructure device and its IP Address should not change. This option requires that you manually specify the network parameters.
 - **DHCP**. With this option, network parameters are assigned by the DHCP server.
4. If you select an IP configuration of **None** (static IP), type the TCP/IP parameters for your Dominion KX II unit: **IP address**, **Subnet mask**, **Gateway IP address**, **Primary DNS server IP address**, and (optional) **Secondary DNS server IP address**.
5. Click **OK**.



C. Name Target Servers

1. Connect all target servers (if you have not already done so).
2. Using the KX II Local Console, select **Device Settings > Port Configuration**. The Port Configuration page opens.
3. Click on the **Port Name** for the desired target server. The Port Page opens.
4. Type a name (up to 32 alphanumeric and special characters).
5. Click **OK**.
6. Repeat for all target servers.

V. Specify Power Supply Auto Detection

The Dominion KX II provides dual power supplies, and can automatically detect and provide notification regarding the status of these power supplies. Use the Power Supply Setup page if you are not using both power supplies.

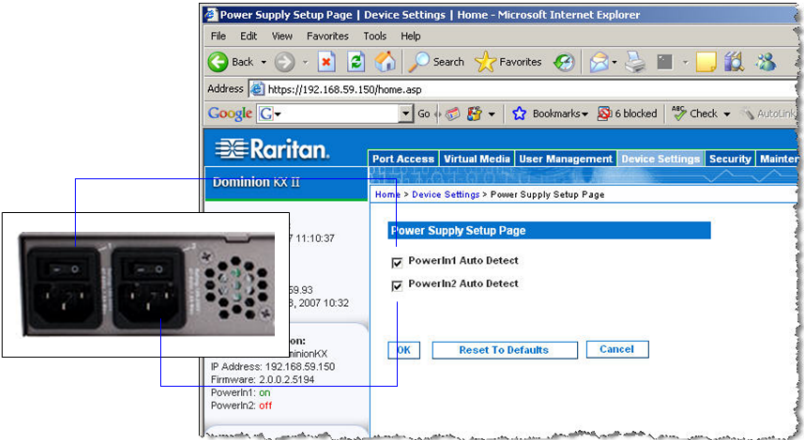
Enable automatic detection for power supplies in use (when both power supplies are not used):

1. Choose **Device Settings > Power Supply Setup**. The Power Supply Setup page opens.
2. If you are plugging power input into power supply number one (left-most power supply at the back of the unit), then check the **PowerIn1 Auto Detect** option.
3. If you are plugging power input into power supply number two (right-most power supply at the back of the unit), then check the **PowerIn2 Auto Detect** option.
4. Click **OK**.

Note: If either of these checkboxes is checked and power input is not actually connected, the power LED at the front of the unit displays red.

VI. Create Users and Groups

User Groups are used with local and remote authentication (via RADIUS or LDAP). It is a good idea to define User Groups before creating individual users, because when you add a user, you must assign that user to an existing user group.

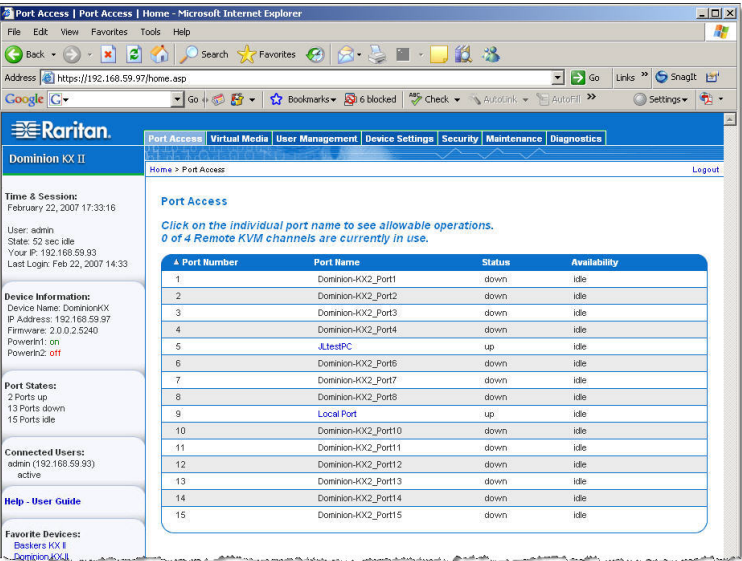


To create a user group:

1. Click the Group page using one of these methods:
- Choose **User Management > Add New User Group**, or
 - Click the **Add** button from the **User Group List** page
2. Type a descriptive name for the new user group into the **Group-name** field.
3. Set the **Permissions** for the group. Check the checkboxes before the permissions you want to assign to *all* users belonging to this group.
4. Set the **Port Permissions** (Access, VM Access, and Power Control). Specify the server ports that can be accessed by users belonging to this group and the type of access. Please note that the default for VM (virtual media) Access, like all port permissions is *off*. To use virtual media, the permission must be enabled.
5. Click **OK**.

VII. Launching the DKX II Remote Console

1. Log on to any workstation with network connectivity to your Dominion KX II unit and Java Runtime Environment v1.4.2_2 or higher installed (JRE is available at <http://java.sun.com/>). JRE version 1.5 is recommended for optimum performance; version 1.6 is also supported.
2. Launch a supported Web browser such as Internet Explorer (IE) or Firefox.
3. Type the following URL: <http://IP-ADDRESS>, where IP-ADDRESS is the IP Address that you assigned to your Dominion KX II unit. The login page opens.
4. Type your **Username** and **Password**.
5. Click **Login**.



Switching between Target Servers

Dominion KX II provides the ability to switch from one target server to another. *This feature is available in the Dominion KX II Remote Console only.*

1. While already using a target server, access the Dominion KX II Port Access page.
2. Click the **Port Name** of the target you want to access now. The Port Action Menu is displayed.
3. Choose the **Switch From** option from the Port Action Menu. The Virtual KVM Client window opens to the new target server selected.

Disconnecting a Target Server

1. From the Port Access page, click the **Port Name** of the target you are accessing. The Port Action Menu is displayed.
2. Choose **Disconnect** from the Port Action menu. The Virtual KVM Client window closes.

IX. For Additional Information

Contact Raritan Technical Support by telephone (732) 764-8886, fax (732) 764-8887, or email tech@raritan.com, Monday through Friday 8:00 AM to 8:00 PM Eastern Time. For more information about the Dominion KX II and the entire Raritan product line, refer to the Raritan User Manuals & Quick Setup Guides CD ROM or Raritan's Website <http://www.raritan.com/support/productdocumentation>

To create a new user:

1. Click the User page using one of these methods:
- Choose **User Management > Add New User**, or
 - Click the **Add** button from the **User List** page
2. Type a unique name in the **Username** field (up to 16 characters).
3. Type the person's full name in the **Full Name** field (up to 64 characters).
4. Type a password in the **Password** field; retype the password in the **Confirm Password** field (up to 64 characters).
5. Choose the group from the **User Group** drop-down list. The list contains all groups you have created in addition to the system-supplied default groups (Admin, <Unknown>, Individual Group). If you do not want to associate this user with an existing User Group, select Individual Group from the drop-down list.
6. Click **OK**.

VIII. Access and Control Target Servers Remotely

The Dominion KX II Port Access page provides a list of all Dominion KX II ports, the connected target servers, their status, and availability.

Connecting to a Target Server

1. From the Port Access page, click the **Port Name** of the target you want to access. The Port Action Menu is displayed.
2. Choose **Connect** from the Port Action menu. A Virtual KVM Client window opens to the target server connected to that port.

