



Congratulations on your purchase of Dominion® KX II, the industry's most full-featured, enterprise class, secure digital KVM (Keyboard, Video, Mouse) switch. This Quick Setup Guide explains how to install and configure the Dominion KX II. Follow the instructions carefully to ensure a quick and easy installation. For more detailed information on any aspect of the Dominion KX II, consult the accompanying User Guide accessible from the Raritan User Manuals & Quick Setup Guides CD or from the Raritan web site Product Documentation Support page.

I. Configure Target Servers

For optimal bandwidth efficiency and video performance, set the OS desktop background to a predominantly solid, plain, light-colored graphic.

Ensure that the server video resolution and refresh rate are supported by Dominion KX II (and that the signal is non-interlaced).

Supported Video Settings

640x350 @70 Hz	800x600 @100 Hz
640x350 @85 Hz	832x624 @75.1 Hz
640x400 @56 Hz	1024x768 @60 Hz
640x400 @84 Hz	1024x768 @70 Hz
640x400 @85 Hz	1024x768 @72 Hz
640x480 @60 Hz	1024x768 @75 Hz
640x480 @66.6 Hz	1024x768 @85 Hz
640x480 @72 Hz	1024x768 @90 Hz
640x480 @75 Hz	1024x768 @100 Hz
640x480 @85 Hz	1152x864 @60 Hz
640x480 @90 Hz	1152x864 @70 Hz
640x480 @100 Hz	1152x864 @75 Hz
640x480 @120 Hz	1152x864 @85 Hz
720x400 @70 Hz	1152x870 @75.1 Hz
720x400 @84 Hz	1152x900 @66 Hz
720x400 @85 Hz	1152x900 @76 Hz
800x600 @56 Hz	1280x960 @60 Hz
800x600 @60 Hz	1280x960 @85 Hz
800x600 @70 Hz	1280x1024 @60 Hz
800x600 @72 Hz	1280x1024 @75 Hz
800x600 @75 Hz	1280x1024 @85 Hz
800x600 @85 Hz	1600x1200 @60 Hz
800x600 @90 Hz	

Mouse Modes

The Dominion KX II operates in several mouse modes: Absolute Mouse Synchronization™ (D2CIM-VUSB is required), Intelligent Mouse Mode (do not use an animated mouse), and Standard Mouse Mode. Mouse parameters do not have to be altered for Absolute Mouse Synchronization. For both the Standard and Intelligent mouse modes, mouse parameters must be set to specific values, which are described in the following paragraphs in this section.

Mouse configurations will vary on different target operating systems; consult your OS documentation for additional detail.

Windows® XP/2003 Settings

1. Configure the mouse:

- Select **Start > Control Panel > Mouse**.
- Open the **Pointer Options** tab. In the **Motion** group:
 - Set the mouse motion speed setting exactly to the middle speed.
 - Disable the **Enhanced pointer precision** option.
 - Click **OK**.

2. Disable transition effects:

- Select the **Display** option from **Control Panel**.
- Open the **Appearance** tab.
- Click the **Effects** button.
- Clear the **Use the following transition effect for menus and tooltips** option.
- Click **OK**.
- Close the **Control Panel**.

Windows Vista Settings

1. Configure the mouse:

- Select **Start > Settings > Control Panel > Mouse**.
- Open the **Pointer Options** tab. In the **Motion** group:
 - Set the mouse motion speed setting exactly to the middle speed.
 - Disable the **Enhanced pointer precision** option.
 - Click **OK**.

2. Disable animation and fade effects:

- Select the **System** option from **Control Panel**.
- Select **Advanced system settings**. The **System Properties** dialog box opens.
- Open the **Advanced** tab.
- Click the **Settings** button in the Performance group. The **Performance Options** dialog box opens.
- Under **Custom** options, clear the following checkboxes:
 - Animate controls and elements inside windows
 - Animate windows when minimizing and maximizing
 - Fade or slide menus into view
 - Fade or slide ToolTips into view
 - Fade out menu items after clicking
- Click **OK**.
- Close the **Control Panel**.

Windows 2000 Settings

1. Configure the mouse:

- Select **Start > Control Panel > Mouse**.
- Open the **Motion** tab.
 - Set the acceleration to **None**.
 - Set the mouse motion speed setting exactly to the middle speed.
 - Click **OK**.

2. Disable transition effects:

- Select the **Display** option from **Control Panel**.
- Open the **Effects** tab.
- Clear the **Use the following transition effect for menus and tooltips** option.
- Click **OK**.
- Close the **Control Panel**.

Linux® Settings

(Standard Mouse Mode only) Set the mouse acceleration to exactly 1 and set the threshold to exactly 1. Enter this command: **xset mouse 1 1**. This should be set for execution upon login.

Sun Solaris™ Settings

- Set the mouse acceleration value to exactly 1 and the threshold to exactly 1.
- Ensure that your video card is set to a supported resolution and that its output is VGA (not composite sync).

Apple® Macintosh Settings

Use the D2CIM-VUSB and Absolute Mouse Synchronization.

IBM® AIX Settings

Go to the **Style Manager**, click on **Mouse Settings** and set **Mouse Acceleration** to 1.0 and **Threshold** to 3.0.

II. Network Firewall Settings

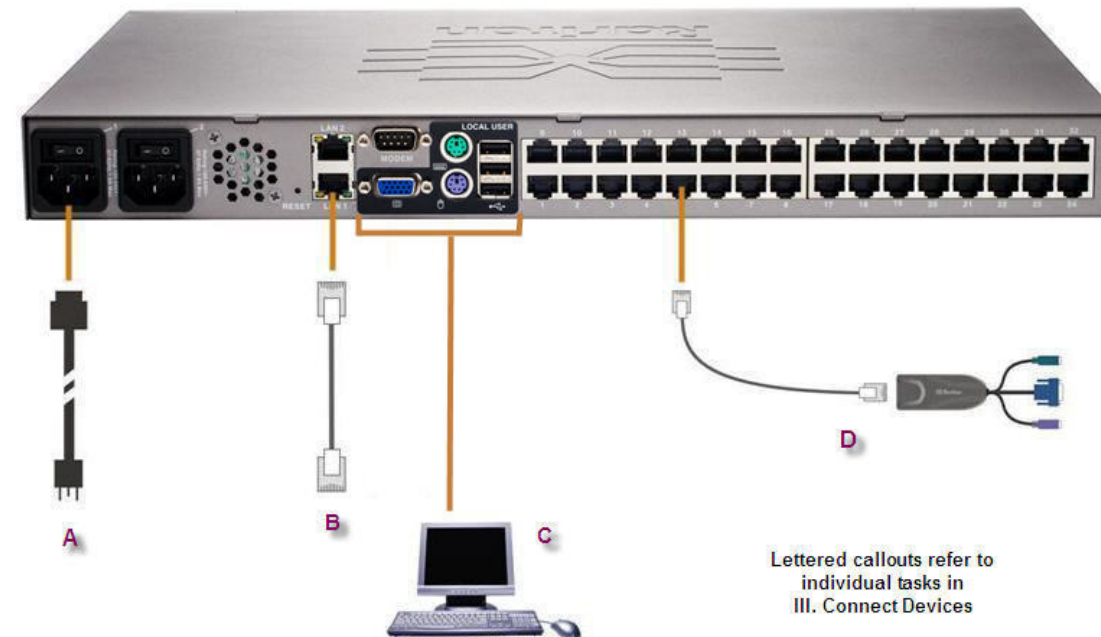
To enable remote access to Dominion KX II, your network and firewall must allow communication on TCP Port 5000. You can also configure Dominion KX II to use a different TCP port; then allow communication on that port.

To access Dominion KX II via Web browser, your firewall must also allow access to TCP Port 443 (Standard HTTPS). Access to TCP Port 80 (Standard HTTP) enables automatic redirection of "HTTP" requests to "HTTPS".

III. Connect Devices

A. AC Power

- Attach the included AC power cord to the Dominion KX II and plug into an AC power outlet.



Lettered callouts refer to individual tasks in III. Connect Devices

- For dual power failover protection, attach the second included AC power cord and plug it into a different power source than the first power cord.

Note: If you only attach one power cord, the power LED on the KX II front panel will display red, because the system is set to automatically detect both power sources. Please refer to Step V for more information about turning off the automatic power detection for the power source not in use.

B. Network Ports

Dominion KX II provides two Ethernet ports for failover purposes (not for load-balancing). By default, only LAN1 is active and automatic failover is disabled. When enabled, if the Dominion KX II internal network interface or the network switch to which it is connected becomes unavailable, LAN2 will be enabled using the same IP address.

- Connect a standard Ethernet cable (included) from the network port labeled LAN1 to an Ethernet switch, hub, or router.
- To make use of the optional Dominion KX II Ethernet failover capability:
 - Connect a standard Ethernet cable from the network port labeled LAN2 to an Ethernet switch, hub, or router.
 - Enable **Automatic Failover** on the **Network Settings** page.

C. Local Access Port (local PC)

For convenient access to target servers while at the rack, use the Dominion KX II Local Access port. While the local port is required for installation and setup, it is optional for subsequent use. The local port also provides a graphical user interface (the KX II Local Console) for administration and target server access.

Attach a multi-sync VGA monitor, mouse, and keyboard to the respective Local User ports,

using either a PS/2 or USB keyboard and mouse.

D. Target Server Ports

Dominion KX II uses standard UTP cabling (Cat5/5e/6) to connect to each target server.

- Use the appropriate Computer Interface Module (CIM).
- Attach the HD15 video connector of your CIM to the video port of your target server. Ensure that your target server's video has already been configured to a supported resolution and refresh rate.
- Attach the keyboard/mouse connector of your CIM to the corresponding ports on your target server. Using a standard straight-through UTP (Cat5/5e/6) cable, connect the CIM to an available server port on the back of your Dominion KX II unit.

IV. KX II Initial Configuration

A. Change the Default Password

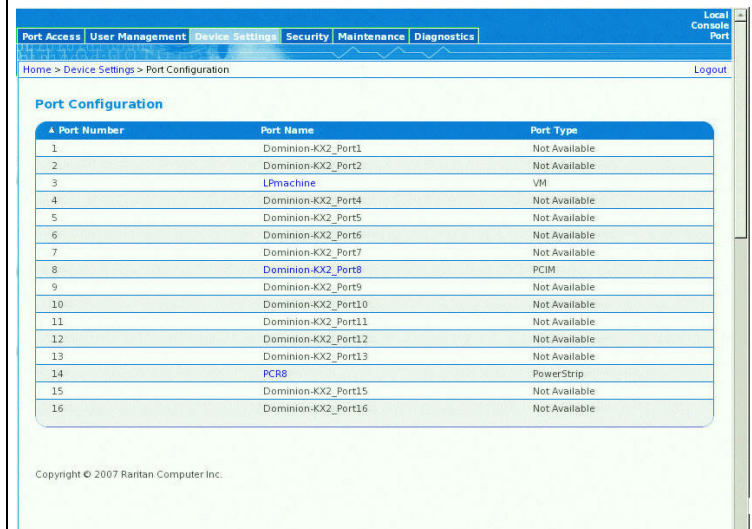
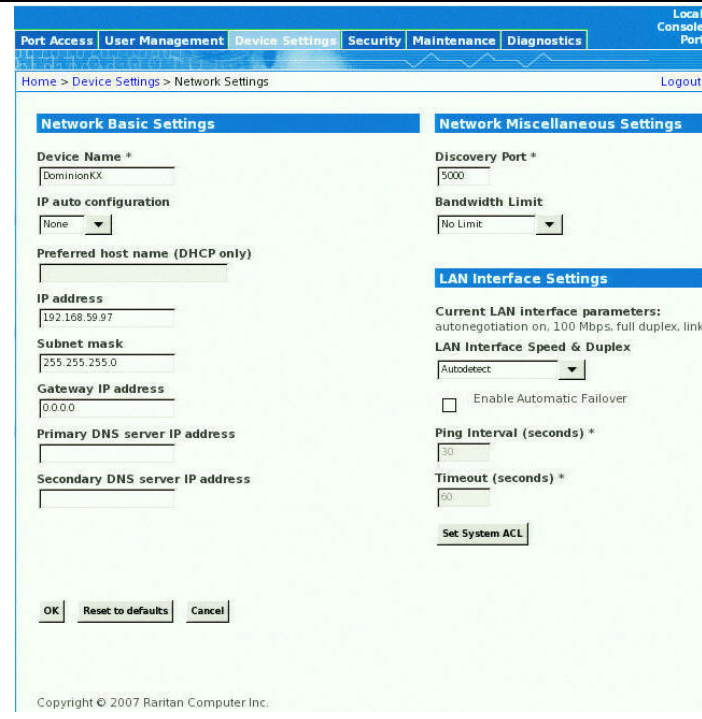
The Dominion KX II unit ships with a default password. The first time you start the Dominion KX II you are required to change that password.

- Power ON the Dominion KX II using the power switch(es) at the back of the unit. Please wait for the Dominion KX II unit to boot. (A beep signals completion of the boot.)
- Once the unit has booted, the KX II Local Console is visible on the monitor attached to the Dominion KX II local port. Type the default username (admin) and password (raritan) and click **Login**. The Change Password screen is displayed.
- Type your old password (raritan) in the **Old Password** field.

- Type a new password in the **New Password** field; retype the new password in the **Confirm New Password** field. Passwords can be up to 64 characters long and can consist of English alphanumeric and printable special characters.
- Click **Apply**.
- You will receive confirmation that the password was successfully changed. Click **OK**. The Port Access page opens.

B. Assign an IP Address

- From the KX II Local Console, select **Device Settings > Network Settings**. The Network Settings page opens.
- Specify a meaningful **Device Name** for your Dominion KX II unit; up to 16 alphanumeric and special characters, no spaces.
- Select the IP configuration from the **IP auto configuration** drop-down list:
 - None (Static IP)**. This is the recommended option because the Dominion KX II is an infrastructure device and its IP Address should not change. This option requires that you manually specify the network parameters.
 - DHCP**. With this option, network parameters are assigned by the DHCP server.
- If you select an IP configuration of **None** (static IP), type the TCP/IP parameters for your Dominion KX II unit: **IP address**, **Subnet mask**, **Gateway IP address**, **Primary DNS server IP address**, and (optional) **Secondary DNS server IP address**.
- Click **OK**.



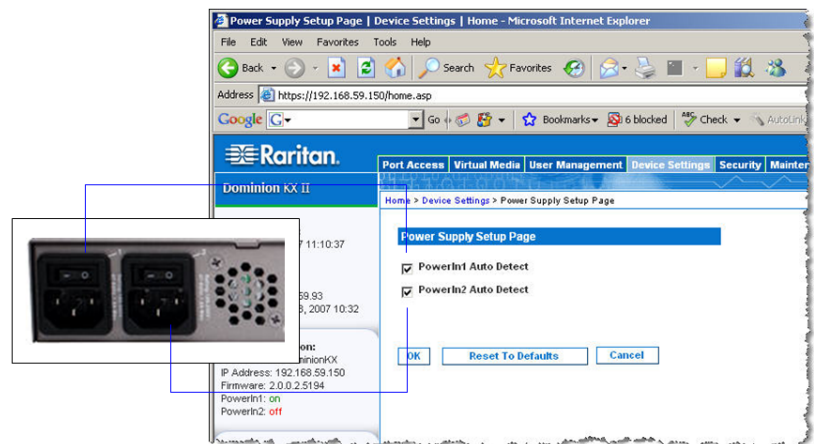
Enable automatic detection for power supplies in use (when both power supplies are not used):

- Select **Device Settings > Power Supply Setup**. The Power Supply Setup page opens.
- If you are plugging power input into power supply number one (left-most power supply at the back of the unit), then check the **PowerIn1 Auto Detect** option.
- If you are plugging power input into power supply number two (right-most power supply at the back of the unit), then check the **PowerIn2 Auto Detect** option.
- Click **OK**.

Note: If either of these checkboxes is checked and power input is not actually connected, the power LED at the front of the unit displays red.

VI. Create Users and Groups

User Groups are used with local and remote authentication (via RADIUS or LDAP). It is a good idea to define User Groups before creating individual users, because when you add a user, you must assign that user to an existing user group.

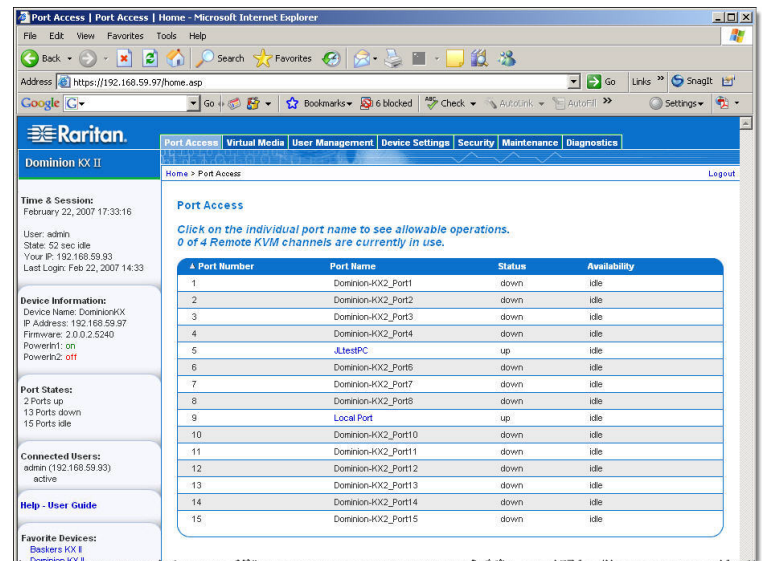


To create a user group:

- Open the Group page using one of these methods:
 - Select **User Management > Add New User Group**, or
 - Click the **Add** button from the User Group List page
- Type a descriptive name for the new user group into the **Group-name** field.
- Set the **Permissions** for the group. Check the checkboxes before the permissions you want to assign to *all* users belonging to this group.
- Set the **Port Permissions** (Access, VM Access, and Power Control). Specify the server ports that can be accessed by users belonging to this group and the type of access. Please note that the default for VM (virtual media) Access, like all port permissions is *off*. To use virtual media, the permission must be enabled.
- Click **OK**.

VII. Launching the DKX II Remote Console

- Log on to any workstation with network connectivity to your Dominion KX II unit and Java Runtime Environment v1.4.2_2 or higher installed (JRE is available at <http://java.sun.com/>). JRE version 1.5 is recommended for optimum performance; version 1.6 is also supported but has not been fully tested.
- Launch a supported Web browser such as Internet Explorer (IE) or Firefox.
- Type the following URL: <http://IP-ADDRESS>, where IP-ADDRESS is the IP Address that you assigned to your Dominion KX II unit. The login page opens.
- Type your **Username** and **Password**.
- Click **Login**.



Switching between Target Servers

Dominion KX II provides the ability to switch from one target server to another. *This feature is available in the Dominion KX II Remote Console only.*

- While already using a target server, access the Dominion KX II Port Access page.
- Click the **Port Name** of the target you want to access now. The Port Action Menu is displayed.
- Select the **Switch From** option from the Port Action Menu. The Virtual KVM Client window opens to the new target server selected.

Disconnecting a Target Server

- From the Port Access page, click the **Port Name** of the target you are accessing. The Port Action Menu is displayed.
- Select **Disconnect** from the Port Action menu. The Virtual KVM Client window closes.

IX. For Additional Information

Contact Raritan Technical Support by telephone (732) 764-8886, fax (732) 764-8887, or email tech@raritan.com, Monday through Friday 8:00 AM to 8:00 PM Eastern Time. For more information about the Dominion KX II and the entire Raritan product line, refer to the Raritan User Manuals & Quick Setup Guides CD ROM or Raritan's Website <http://www.raritan.com/support/productdocumentation>

To create a new user:

- Open the User page using one of these methods:
 - Select **User Management > Add New User**, or
 - Click the **Add** button from the User List page
- Type a unique name in the **Username** field (up to 16 characters).
- Type the person's full name in the **Full Name** field (up to 64 characters).
- Type a password in the **Password** field; retype the password in the **Confirm Password** field (up to 64 characters).
- Select the group from the **User Group** drop-down list. The list contains all groups you have created in addition to the system-supplied default groups (Admin, <Unknown>, Individual Group). If you do not want to associate this user with an existing User Group, select Individual Group from the drop-down list.
- Click **OK**.

VIII. Access and Control Target Servers Remotely

The Dominion KX II Port Access page provides a list of all Dominion KX II ports, the connected target servers, their status, and availability.

Connecting to a Target Server

- From the Port Access page, click the **Port Name** of the target you want to access. The Port Action Menu is displayed.
- Select **Connect** from the Port Action menu. A Virtual KVM Client window opens to the target server connected to that port.

