

## CommandCenter<sup>®</sup> Secure Gateway Release 5.0.0

**Rev. 1, October 15, 2010**

Added note about Firefox and VMware Viewer.

---

### Contents

Introduction .....	2
Applicability .....	2
Upgrade Path .....	2
New Features and Updates in This Release .....	3
Security and Compliance Information .....	8
Updated Product Documentation .....	8
General Notes .....	8
Limitations and Restrictions .....	9

---

*(Note – numbers in parentheses throughout this document are reference numbers internal to Raritan.)*

## Introduction

These Release Notes contain important information regarding the release of this product. Please read the entire document and the related documentation available for this release.

The CC-SG release number has moved up from 4.x to 5.x because the platform, beginning with 5.0.0, has been adapted to interoperate with Raritan's new licensing technology and process. Further information on the new licensing functionality is provided in the new features section of this document.

Release 5.0.0 documentation and firmware is available at <http://www.raritan.com/support/commandcenter-secure-gateway/>.

## Applicability

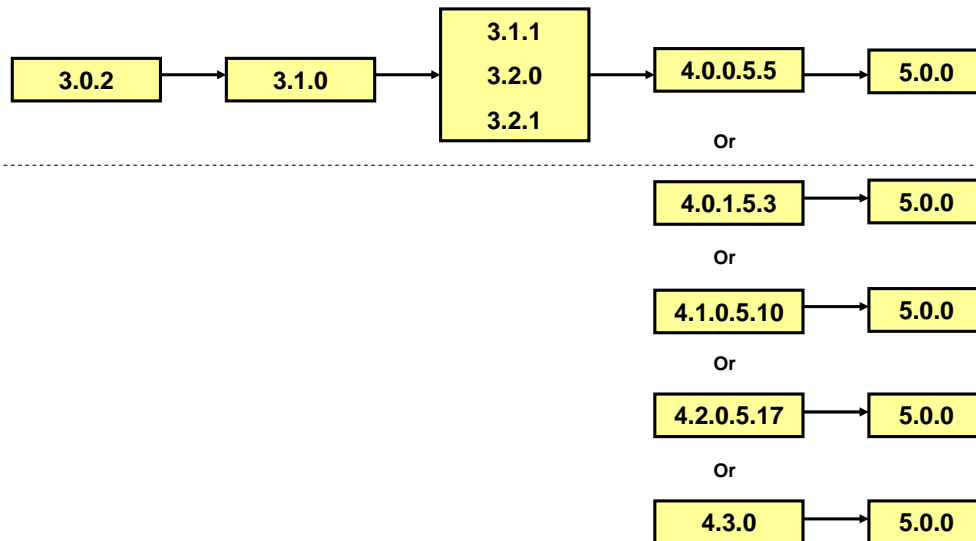
CC-SG 5.0.0 is applicable to CommandCenter ® Secure Gateway hardware models CC-SG-V1 and CC-SG E1 only.

**Important note for CC-G1 customers:** Raritan discontinued the CC-G1 model in June of 2007. **Do not attempt to upgrade your CC-G1 to this release.** Please back up your CC-G1, restore the database to a CC-SG V1 or E1 hardware unit running the same firmware version, and upgrade the new V1 or E1 hardware unit to this release per the Upgrade Path instructions below.

## Upgrade Path

To upgrade to this release you must be running firmware version 4.0.0.5.5 or higher, as depicted in the diagram below. There may also be additional upgrade steps to take, depending on your current version. As indicated above, you can upgrade CC-SG V1 or CC-SG E1 but **not CC-G1** units to 5.0.0.

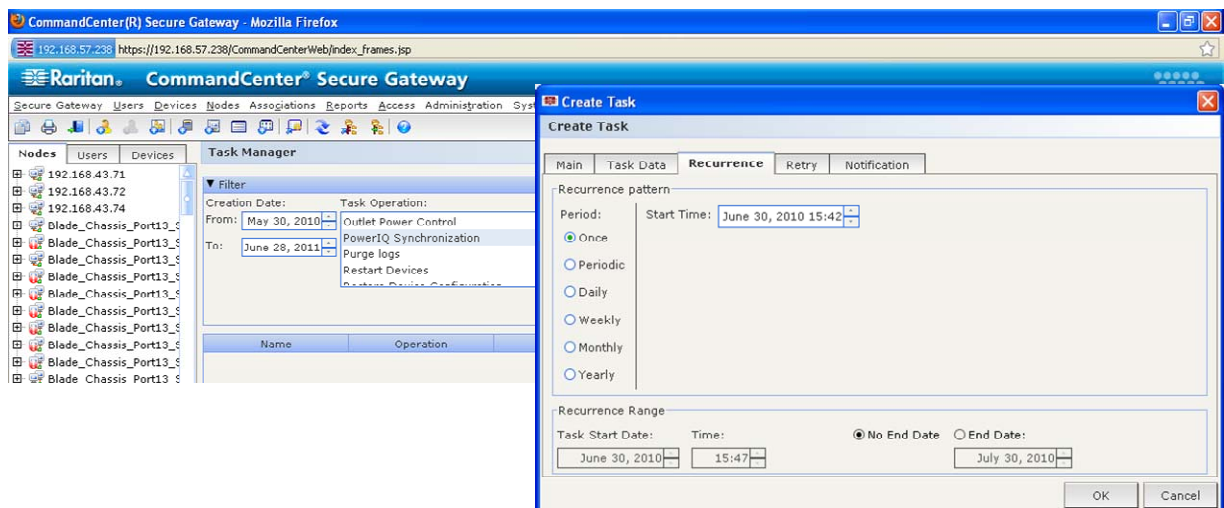
For customers with firmware version 3.x.x and higher, the following diagram depicts the possible upgrade paths to this release:



Please back up your CC-SG before and after any upgrade step. For detailed step by step instructions on upgrading, refer to the Readme file available with this CC-SG release. You may also need to upgrade your other Raritan devices. For a complete list of supported devices, refer to the Compatibility Matrix. For instructions on upgrading devices, refer to the CC-SG Administrators Guide.

## New Features and Updates in This Release

1. **Power IQ Data Synchronization:** Through the task setting function, Power IQ IT Devices designated as CC-SG managed nodes can be retrieved from Power IQ into CC-SG on a scheduled basis. Synchronization from Power IQ can be performed on demand as well.



This feature helps to significantly streamline administrative tasks for customers of both CC-SG and Power IQ, as it eliminates duplicated data entry efforts.

2. **KX II Generic Hot Key Switching Support:** This new KX II capability enables access to Raritan and third party KVM switches that are “hotkey-switchable” from their local ports. CC-SG supports this feature by consolidating the 3<sup>rd</sup> party switch ports into CC-SG’s KX II port access list. Please see the KX II 2.3 release notes for further details.
3. **VMware 4.0 Support:** CC-SG VMware access support has been upgraded. CC-SG now supports access to vSphere 4 releases of ESX, ESXi and VMware Server. Included in this support is the ability to mount virtual media drives to a virtual machine.

Please note: When upgrading your Virtual environment from a previous version to vSphere 4, it will be necessary to remove the VMware Remote Console plugin-in from the browser (IE, FF).

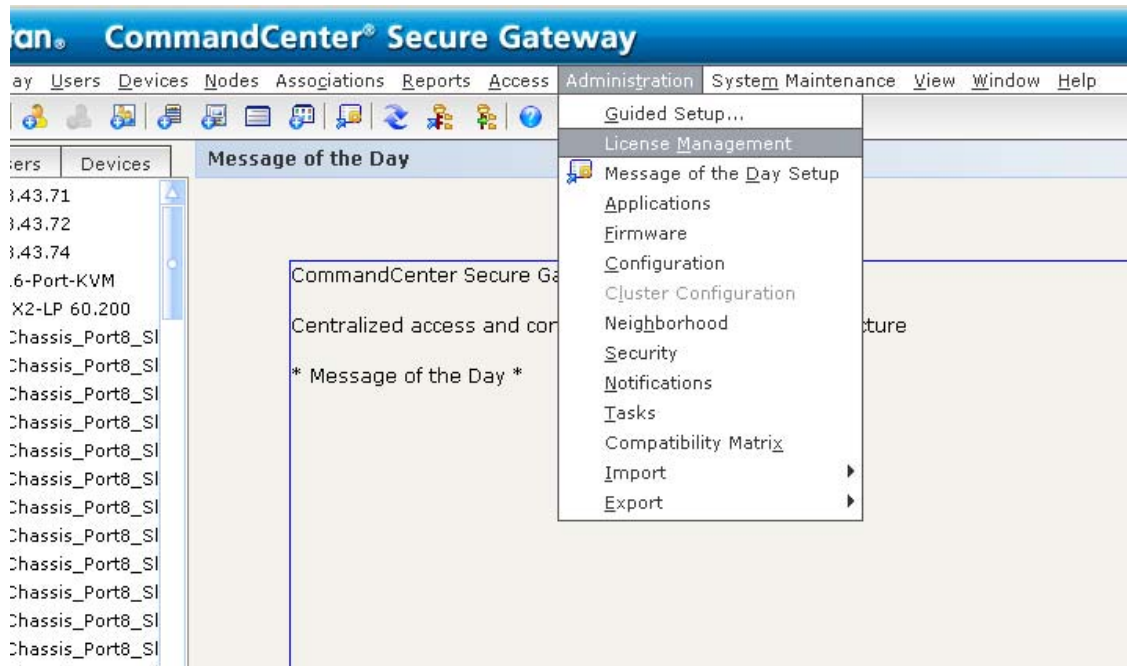
After removing the plug-in, the correct plug-in for vSphere4 will be installed the next time you connect to a Virtual Machine from the CCSG.

4. **VM Virtual Media Support:** Through your CC-SG access, you may use VMWare 4.0 Remote Console to enable a virtual machine to access the physical CD/DVD and floppy drives on the ESX Server host or the Client PC.
5. **DRAC6 Support:** CC-SG now supports DRAC version 6, in addition to versions 4 and 5. The supported DRAC6 version is 1.30.
6. **Updated iLO / iLO2 Support:** Now updated to iLO and iLO2 versions 1.91 and 1.82, respectively.
7. **IBM IMM Module:** Access to the IMM can be set up as an IPMI interface. Support for the IMM is limited to power control functions (off, on, recycle). The tested IMM version is the standard version.
8. **Node Frame Sizing:** In the “Admin” client, the frame that contains the list of nodes can be resized with the mouse in order to view the node names’ entire length. This is not a feature of the “Access” client. As a result, in previous releases, the characters in some node names were not all visible. In this release, the node frame in the Access client takes on the width of the node with the longest number of characters. Resizing is not performed with the mouse, but because the window now automatically extends horizontally to show the longest node name, no names are cut off and all can be seen.
9. **Blade Node Name:** An issue as described in the following scenario was

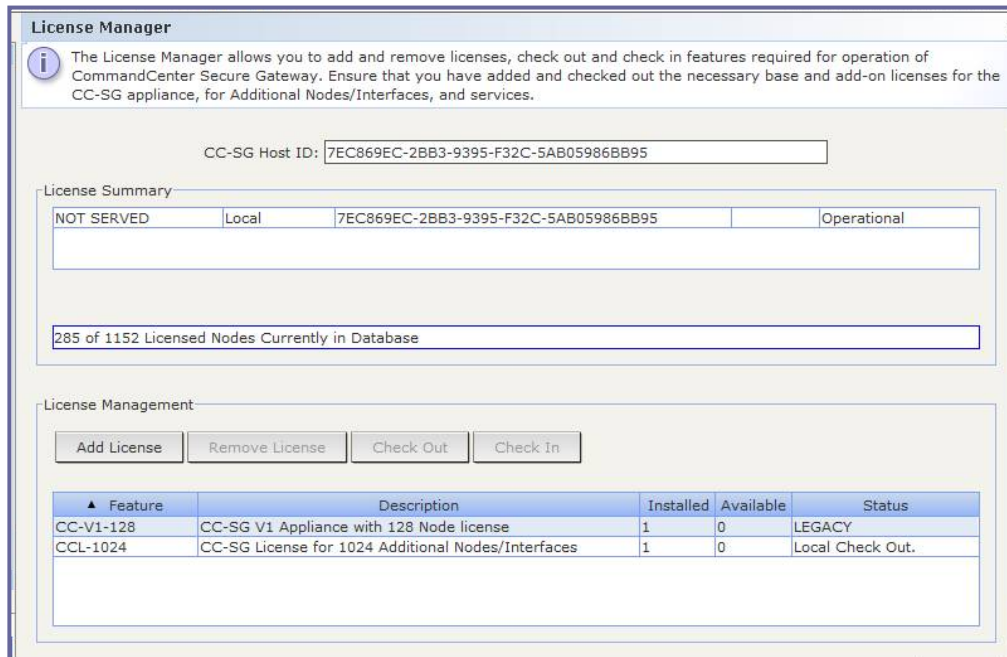
addressed. If a blade chassis is managed by KX2 and CC-SG, and the chassis type is changed (for example, from "Generic" to IBM Chassis), the blade node names in CC-SG could not be modified. This is now corrected.

10. **Change Notification of AD Groups:** CC-SG now detects and reports on changes of AD groups.

11. **New Licensing Architecture:** As of this release, CC-SG establishes and tracks node licenses through its new License Manager.



Sample:



During the upgrade process, CC-SG will convert licenses to a base license and any applicable “add-on” licenses, based on the quantity of nodes in the unit’s database. Beginning with release 5.0, all CC-SG units (when upgraded or when shipped new from the factory) receive a 128-node base license, which provides the units base feature functions and access for up to 128 nodes. If there are more than 128 nodes in the database, a second license known as an “Add-On” license is created and added to the base license. The created Add-On license is rounded up, based on the following license levels (as also seen in the Raritan price list):

CCL-64	64 node license
CCL-128	128 node license
CCL-256	256 node license
CCL-512	512 node license
CCL-1024	1024 node license
CCL-2048	2048 node license
CCL-4096	4096 node license
CCL-8192	8192 node license

For example, if there are 400 nodes in the database, an add-on license for 512 nodes will be established – in addition to the 128 node base license.

The process of upgrading and establishing the license(s) has been designed in a manner that is *as seamless as possible for current CC-SG customers*. During the upgrade, the new firmware release captures the unit’s unique ID and current nodes – and uses this information to establish the new license(s). Upon completion of the upgrade, the licenses can be

found in the new "License Manager" menu.

Once the upgrade to 5.0.0 is completed, your node licenses have now been established and the unit's node access will be limited to the amount of nodes as displayed in the License Manager. If you need to add to your node licenses in the future, please contact your Raritan sales representative.

*Clustered Licensing:* In a clustered configuration, in which a 2nd CC-SG serves as a failover unit to a primary unit, 'Cluster' licenses are shared. The base and add-on licenses are bound to the two CC-SG node host IDs identified in the license files. License files should be added to, and features checked out, on the designated primary node in the cluster. They will be automatically transferred to the backup node when the two CC-SG nodes are joined into a cluster.

The licenses allow for the cluster to be temporarily deleted so that maintenance activity, such as firmware upgrades, may be performed.

**Important:** Important: It is highly recommended that upgrading and/or license management is performed at a pre-arranged time, during which users are not accessing the system. The system requires that the required licenses are added and features are activated in order to be in the operational state. Until that time system access is limited, devices and nodes are not available.

If direct access to devices is needed while the CC-SG is not in the fully operational state and the device indicates it is still under CC-SG management: Shut down the CC-SG application using System Maintenance > Shutdown. After the timeout period the devices will be directly accessible.

---

**Note:** If your CC-SG unit is relatively new, the database may include considerably less nodes than those for which licensing was purchased. As a result, the node licenses established during your upgrade may be lower than the purchased amount. Should this occur, please contact your closest Raritan office and report the issue to Customer Service.

---

## Security and Compliance Information

Refer to the CC-SG Administrators Guide 'Appendix B: CC-SG and Network Configuration' for specific settings.

## Updated Product Documentation

Updated documents available with this release include:

- CC-SG 5.0.0 Upgrade Readme File
- Compatibility Matrix
- Administrators Guide
- Users Guide
- Quick Setup Guide

## General Notes

1. If using Windows XP or Vista, CC-SG supports the 64 bit OS. However, if using a Java plug-in, only the 32 bit plug-in is supported. See <http://java.sun.com/javase/6/webnotes/install/system-configurations.html> for Java support information. (17855)
2. For optimal operations, disable the pop-up blocker in your browser.
3. Virtualization: During the first connection to a virtual machine, you may be asked to download an add-on from VMware. Once the add-on is installed, please restart your browser.
4. If you are using Firefox on Windows, you must add the IP address of the CC-SG to the Allowed Sites for Add-ons list and the Allowed Sites for Pop-ups list in the browser before connecting to a VMW Viewer interface.
5. Cluster rebuilds: When selecting a rebuild time, please be aware of possible differences in time zones between units.
6. During the CC-SG boot-up sequence, should the following message be displayed, it can be safely ignored (seen on the local KVM console port only):

```
Memory for crash kernel (0x0 to 0x0) notwithin permissible range
```

7. During boot-up, a normal delay of up to two minutes may occur after seeing the following message (local KVM console port only):

```
Red Hat nash version 5.1.19.6 starting
```



## Limitations and Restrictions

1. Supported JRE versions for this release include 1.6.0\_10 thru 1.6.0\_20.
2. The "Bookmark Node" feature is not supported when using Internet Explorer version 8 (IE8). (20053, 20237)
3. The "Exit" option in the MPC client's "Connection" menu does not function when running on Linux. Use the X in the corner of the window as an alternative. This issue has been seen when using the following:
  - Fedora Core 6: JRE 1.6.0\_13; Firefox 3.0.10
  - Fedora Core 7: Firefox 2.0.0.14, JRE 1.5.0\_13 and JRE 1.6.0\_13
  - Red Hat Enterprise - Release 5.2: Firefox 3.0.10, JRE 1.6.0\_07 and JRE 1.6.0\_13(19999)
4. CC-SG is not supported for use with Firefox 3.0.11. Versions 3.0.13, 3.0.14, 3.5.x and 3.6.x are supported. FF 3.5.x and 3.6.x are recommended.
5. RSA Remote Console cannot be launched from CC-SG when using JRE 1.6.0\_10 and higher. Downgrade to 1.6.0\_07. This is a SUN issue, and when fixed will no longer be a restriction in CC-SG. (19651)
6. IE6 does not support AES-256 encryption and XP with IE6/IE7 does not support AES-256 encryption.
7. If enabling AES 256, ensure that the jurisdiction files are installed on the client. Otherwise, you will be locked out of the CommandCenter.
8. When using a Linux client, the Virtualization topology view cannot be printed.
9. VMware Viewer and Firefox version 3.6.x are not compatible.