



## CommandCenter Secure Gateway Overview

Congratulations on your purchase of CommandCenter Secure Gateway (CC-SG) G1 unit, Raritan's management software platform engineered to consolidate secure access and control of IT devices. This document provides instructions for getting your CC-SG up and running in a minimal amount of time. Prior to installing a CC-SG, you should prepare the devices that will be managed by CC-SG. Please refer to the **Raritan Digital Solution Deployment Guide** for additional information.

### I. Unpack CC-SG

With your shipment, you should receive:

- (1) CommandCenter Secure Gateway unit
- (1) Rack mount kit
- (2) Power supply cord
- (1) CAT 5 network cable
- (1) Printed Quick Setup Guide (this document),
- (1) Raritan User Documentation CD-ROM
- Registration and Warranty papers

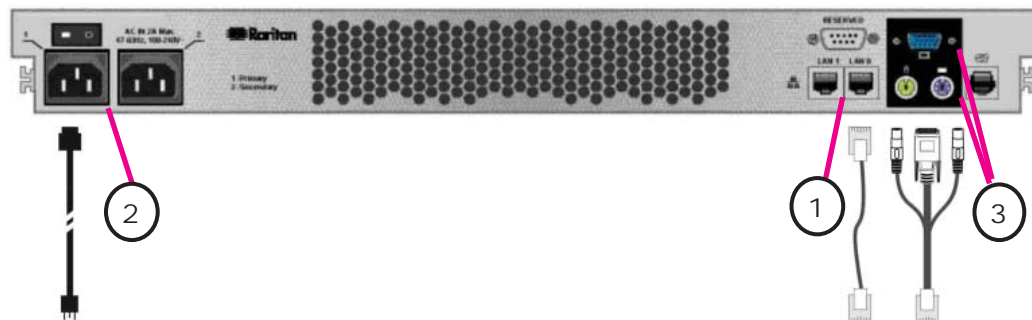
### Technical Support

Please contact Raritan U.S. at 800.724.8090 between 8:00 AM and 8:00 PM EST or call your local Raritan office if you do not receive all items listed here.

### Determine Rack Location

Decide on a suitable location in the rack for CC-SG, which should be in a clean, dust-free area that is well ventilated. Avoid areas where heat, electrical noise, and electromagnetic fields are generated and place it near a grounded power outlet.

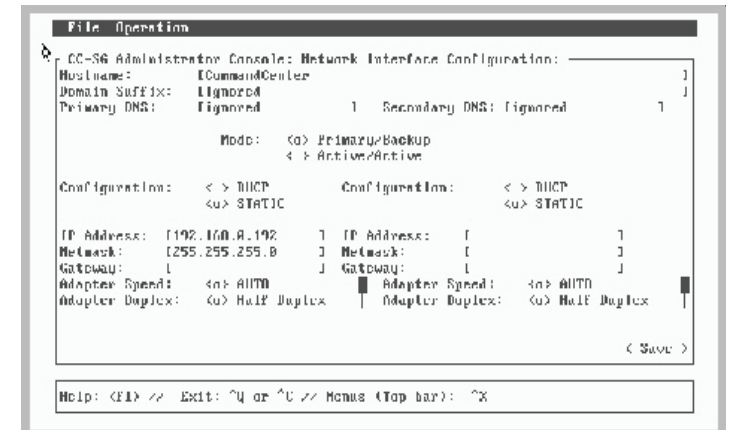
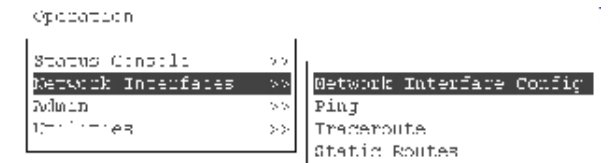
### II. Connect Cables



1. Connect the network LAN cable to the LAN 0 port on the rear panel of the CC-SG unit. Connect other end of cable to the network.
2. Attach an included AC power cord to the power port 1 on the rear panel of the CC-SG unit. Plug the other end of the cord into an AC power outlet.
3. Connect Keyboard and Video cables to the corresponding ports on the rear panel of the CC-SG unit.

### III. Set CC-SG IP Address

1. Power ON CC-SG by pressing the power switch on the back panel of the unit.  
**Note:** To power OFF CC-SG, firmly press the POWER switch and wait for approximately one minute while CC-SG powers down.
2. When you see the login prompt on the video output, log in as **admin/raritan**. Usernames and passwords are case-sensitive.
3. When prompted to change your password, first type **raritan**, then type a new password, and then type the new password again to confirm it.
4. The admin console will appear. Type **CTRL+X** to select the menu at the top of the console.
5. Select the the **Operation** menu.
6. Select the **Network Interfaces** menu.
7. Select **Network Interface Config**. The Network Interface Configuration screen appears.
8. In the **Configuration** field, select **DHCP** or **Static**. If you select **Static**, type a static IP address. If needed, specify DNS servers, netmask, and gateway address.
9. Select **Save**. Please wait a few minutes as CC-SG restarts.



### Default CC-SG Settings:

- IP Address:** 192.168.0.192
- Subnet Mask:** 255.255.255.0
- Username/Password:** admin/raritan

### IV. Log onto CC-SG

1. Once CC-SG has started, use a supported Internet browser and type the URL of the CC-SG: `http://<IP address>/admin`  
For example, `http://10.0.3.30/admin`.
2. When the security alert window appears, click Yes.
3. You will be warned if you are using an unsupported Java Runtime Environment version on your machine. The Login window appears.
4. Log onto CC-SG with the default login name and password (**admin/raritan**).



Please refer to the **CommandCenter Secure Gateway Administrator Guide** for additional information.